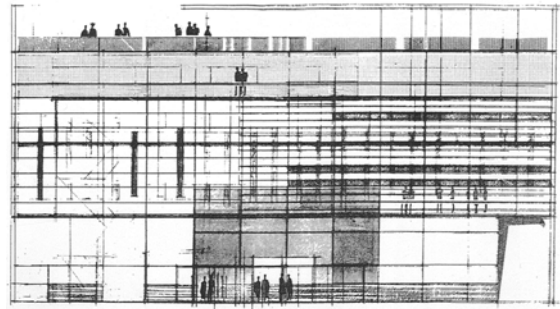


## Facades (Threshold 2)

*Façade Study Drawing for Art Academy in Berlin  
by Behnisch + Partner, 1995*



### Context

In its patterning and organization, a successful façade design expresses a building's *identity* – the activities, order and atmosphere occurring within. Facades serve as thresholds between interior and public exterior space, allowing the transmission of desired phenomenon (views + contact between people, cooling summer breezes, light, the exhaling of stale indoor air) and the disruption/blockage of unwanted phenomenon (direct summer sun, winter rains, etc.). Successful facades generally do not exhibit guillotine-like separation between interior and exterior space, but rather a more nuanced, enriched, thickened profiling.

### Project Components

#### A *Generate Sketch Variations (due in class on Monday 11/7, 4:15pm)*

Develop additive, subtractive and hybrid ink-on-trace hardline “sketch” variations of your building's facades. Create **five (5) variations** of the Alberta Street façade and the garden façade. Overlay these variations one-on-top-of-the-other in the search for meaningful patterns. Give careful consideration to **rhythm, proportion, materiality, entry / arrival** and **detail**. Consider

- the structural bays and interior spaces
- the size of the human figure and the specific experiences that the façade design will encourage
- context and implications for the character of the street

#### B *Develop Façade Relief (due in class Wednesday 11/9, 4:15pm)*

From your favorite variation, develop a “2 1/2 D” relief of your project's Alberta Street façade in a computer modeling program of your choice (i.e. *Sketch Up, Form Z, Vectorworks* or *AutoCad*). The emphasis should be on the façade, but you must also represent the “life” behind the façade – activities, colors, furnishings, structure, etc.

Show your façade in context with shadows.

#### C *Render (due at Review on Friday 11/11)*

Bring a rendering of your 2 1/2 D relief into Photoshop to introduce materials, people, text, cars, etc. Print it out at 1/4" = 1'-0".

### Project Objectives

- To explore variations in patterning, composition and order in the search for a successful façade design solution.
- To identify unresolved aspects of building organization; to use façade development as an opportunity to improve the overall building design.
- To consider how a façade design can connect or separate the building and street
- To explore a range of media in examining one architectural condition.

Fall 2005

**Architecture 281 INTERMEDIATE ARCHITECTURAL DESIGN I**

Bleher • Cheng • Clarke • Kal • Muller • Salter • Teal

Ex 07

date: Mon. 11.07.05

For Friday's Review

¼" Photoshop collage of main façade

1/8" plans and sections

1/8" model that fits into the cardboard context model

Previous work

Inspiration